

Figure. (2). Solubility as function of pH of Casein (Cn), Chlorella protein isolated (CPI) and Casein / Chlorella protein co-precipitate (5%, 10% and 15%) mixtures.

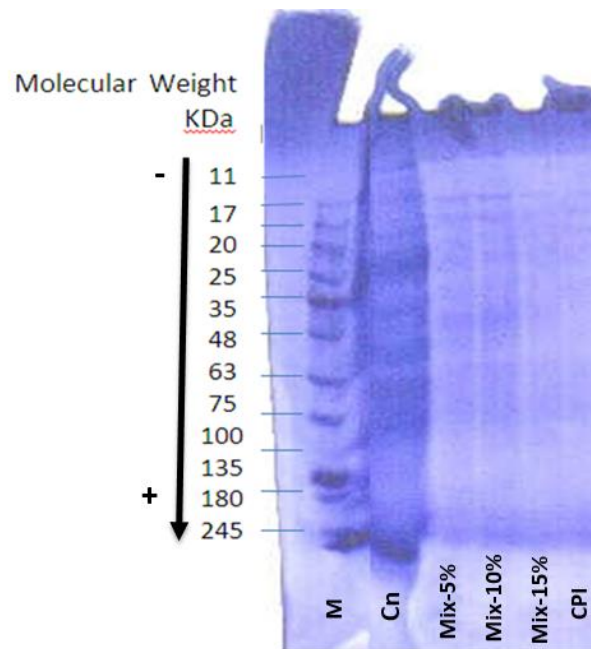


Figure (1) SDS-polyacrylamide gel electrophoresis of casein (Cn), chlorella protein isolate (CPI), casein / chlorella protein co-precipitate mixtures , Mix-5, Mix-10 , Mix-15% and protein molecular weight marker (M) .

